



Regional Transportation  
Technical Advisory Committee (RTTAC)

***Meeting Agenda***

*April 13, 2011 – 1:30 PM*

*South Florida Regional Transportation Authority Board Room,  
800 NW 33<sup>rd</sup> Street  
Pompano Beach, FL*

- 
- I** Call to Order
  - II** January 12, 2011 Meeting Notes
  - III** HUD Sustainable Communities Grant Status Report
  - IV** Transportation Regional Incentive Program Process
  - V** 2010 Regional Report
  - VI** Regional Public Involvement Management Team Report
  - VII** RTTAC Modeling Subcommittee
  - VIII** SEFTC Meeting Proposed Agenda Items
  - IX** 2040 Regional Long Range Transportation Plan
  - X** Other Business
  - XI** Next RTTAC Meeting
  - XII** Adjournment



Regional Transportation  
Technical Advisory Committee (RTTAC)  
*January 12, 2011 Meeting Notes*

---

The following is a summary of the RTTAC meeting held on January 12, 2011.

**MEETING TIME AND LOCATION**

SFRTA, 1:30 p.m.

**MEETING ATTENDEES**

1. Randy Whitfield, Palm Beach MPO, [rwhitfie@pbcgov.com](mailto:rwhitfie@pbcgov.com)
2. Paul Flavien, Broward MPO, [flavienp@browardmpo.org](mailto:flavienp@browardmpo.org)
3. Greg Stuart, Broward MPO, [StuartG@browardmpo.org](mailto:StuartG@browardmpo.org)
4. Wilson Fernandez, Miami-Dade MPO, [Wilson@miamidade.gov](mailto:Wilson@miamidade.gov)
5. Jonathan Roberson, BCT, [jroberson@broward.org](mailto:jroberson@broward.org)
6. Ken Jeffries, FDOT D6, [ken.jeffries@dot.state.fl.us](mailto:ken.jeffries@dot.state.fl.us)
7. Lois Bush, FDOT D4, [lois.bush@dot.state.fl.us](mailto:lois.bush@dot.state.fl.us)
8. Jeremy Mullings, FDOT D4, [Jeremy.mullings@dot.state.fl.us](mailto:Jeremy.mullings@dot.state.fl.us)
9. Shi-Chiang Li, FDOT D4, [shi-chiang.li@dot.state.fl.us](mailto:shi-chiang.li@dot.state.fl.us)
10. Joseph Quinty, SFRTA, [quintyj@sfrta.fl.gov](mailto:quintyj@sfrta.fl.gov)
11. Chris Heshmati, SFRPC, [cheshmati@sfrpc.com](mailto:cheshmati@sfrpc.com)
12. Kim Samson, Florida Turnpike, [Kim.Samson@dot.state.fl.us](mailto:Kim.Samson@dot.state.fl.us)
13. Jessica Josselyn, Kittelson & Associates, Inc., [jjosselyn@kittelson.com](mailto:jjosselyn@kittelson.com)
14. Darryl dePencier, Kittelson & Associates, Inc., [ddepencier@kittelson.com](mailto:ddepencier@kittelson.com)

**MEETING NOTES**

The following is a summary of the key points discussed at the meeting. The comments have been organized by agenda topic. Underlined text highlights deadlines/schedules/and motions.

**I) Call to Order**

Randy Whitfield called the meeting to order.

**II) November 17, 2010 Meeting Notes**

The meeting minutes were approved with no changes.

**III) Regional Report**

Lois Bush gave the committee a brief update on the Regional Report status. In summary, the report is in progress and will be presented at the April SEFTC meeting.

**IV) Sustainable Communities HUD Grant**

A brief update on the HUD grant was given to the RTTAC. It was stated that Isabel Cosio Carballo went to Cambridge, Massachusetts for the sustainable communities with living cities 'boot camp'. It was also mentioned that the DOT has hired consultants (Renaissance Planning Group and Cambridge Systematics) to assist with the required work plan and budget information. Once an agreement on the work plan and budget is signed between all parties, the overall completion of the plan is 36 months. The discussion to hire a consultant project manager is still occurring and will be finalized after the work plan is prepared. Currently, a grant management committee is reviewing the work plan. Once their review is complete, decisions will be made regarding how to best release the information and engage the partners.

FDOT District 4 may present at the next RTTAC meeting the scenario planning information that has been prepared to date with the regional partners.

Aside from the work plan, Cambridge is also doing research on partnership building and longevity for the process.

**V) January 24, 2011 SEFTC Meeting Proposed Agenda Items**

Randy Whitfield gave the group a brief overview of the SEFTC January 24<sup>th</sup> draft agenda:

- Smartcard status report
- Elections
- HUD Grant status report
- Regional Performance Measures introduction
- Interlocal Agreement

The 2009-2010 Regional Report item was moved to the April SEFTC agenda.

**VI) RTTAC Modeling Subcommittee**

It was discussed as to what the Regional Consultant was responsible for in terms of SERPM 7.0 support. Jessica Josselyn stated that the Regional Consultant contract has scoped 4 meetings per year over a two year period and that SERPM 7.0 support was not included.

Wilson Fernandez discussed that the subcommittee is taking on the SERPM 6.5 upkeep (i.e., land use amendments, etc.) and that some assistance may be needed.

**VII) Regional Performance Measures Update**

Jessica Josselyn and Darryl dePencier from Kittelson & Associates gave the group an overview of the Regional Performance Measures work being prepared under the Regional Consultant contract. It was stated that the following agencies were identified as agencies we want to interview for helpful/relevant performance measurement information:

1. Delaware Valley Regional Planning Council - DVRPC (Philadelphia, PA)
2. Denver Regional Council of Governments - DRCOG
3. Metropolitan Council (Minneapolis, MN)
4. San Diego Association of Governments – SANDAG
5. Metropolitan Transportation Commission - MTC (San Francisco, CA)
6. Puget Sound Regional Council - PSRC (Seattle, WA)

Joe Quinty stated that DVRPC's transit score approach has been previously looked at for a South Florida application, but that it has been difficult to apply locally.

**VIII) Other Business**

No 'Other Business' was discussed.

**IX) RTTAC 2011 Calendar**

A 2011 calendar was distributed to the RTTAC for review. At the meeting the group determined the schedule was appropriate and to have it posted on the SEFTC website.

**X) Next RTTAC Meeting – February 16, 2011**

**XI) Adjournment**



**SEFTC**  
Southeast Florida  
Transportation Council



MEMORANDUM

TO: RTTAC Members

FROM: Randy M. Whitfield, P.E.  
Chair

DATE: April 13, 2011

RE: **Transportation Regional Incentive Program Process**

---

FDOT has notified SEFTC of the availability of Transportation Regional Incentive Program (TRIP) funds. The following funding levels are available.

District 4	FY 15/16	\$2,895,110
District 6	FY 14/15	\$1,265,569
	FY 15/16	\$1,637,816

FDOT has requested draft applications be submitted by June 1, 2011. The Department will review the applications and provide input. Final applications will be due from SEFTC by October 1, 2011.

In the past, SEFTC has provided a list of projects based on various prioritization methods. Last year, the list was based on a composite of those previous lists. The recently adopted Regional Long Range Transportation Plan (RLRTP) includes a list of projects but no final prioritization methodology was adopted. Direction is needed for the approach to be taken for selection of projects to be submitted by SEFTC. Options include use of previous lists or composites, prioritization of the RLRTP projects, solicitation of projects on the RLRTP or other means. Discussion of the approach to take will occur at the meeting.

**Staff Recommendation: For discussion and direction.**

RMW/eer



**SEFTC**  
Southeast Florida  
Transportation Council



MEMORANDUM

TO: RTTAC Members

FROM: Randy M. Whitfield, P.E.  
Director

DATE: April 13, 2011

RE: **2010 Regional Report**

---

FDOT has prepared the attached report documenting progress made by the three Southeast Florida MPOs in addressing regional transportation planning. These regional activities take place through the Southeast Florida Transportation Council (SEFTC) and its committees. FDOT is also a partner in the regional transportation planning process. The report documents the efforts in moving forward in achieving major objectives identified previously by FDOT and the MPOs. FDOT staff will present a summary of the report at the meeting.

**Staff Recommendation: For information purposes.**

RMW/eer

Attachment

# **Miami Urbanized Area / Transportation Management Area 2009-10 Regional Report**

**Prepared for the:**  
Miami-Dade, Broward, and Palm Beach  
Metropolitan Planning Organizations  
and Southeast Florida Transportation Council

**Prepared by:**  
Florida Department of Transportation (FDOT)

## Table of Contents

- I. Introduction**
- II. Background**
- III. Regional Long Range Transportation Plan**
- IV. Regional Project Prioritization**
- V. Regional Public Involvement**
- VI. Regional Land Use Strategies**
- VII. Regional Performance Measurement**
- VIII. Evolving Challenges and Opportunities**
- IX. Recommendations**

**Appendix A: Miami Urbanized Area/Transportation Management Area**

**Document Acronyms:**

<b>Acronym</b>	<b>Definition</b>
<b>EPA</b>	U.S. Environmental Protection Agency
<b>FDOT</b>	Florida Department of Transportation
<b>FTP</b>	Florida Transportation Plan
<b>HUD</b>	U.S. Department of Housing and Urban Development
<b>LRTP</b>	Long Range Transportation Plan
<b>MPO</b>	Metropolitan Planning Organization
<b>RCAC</b>	Regional Citizens Advisory Committee
<b>RLRTP</b>	Regional Long Range Transportation Plan
<b>RPC</b>	Regional Planning Council
<b>RPIMT</b>	Regional Public Involvement Management Team
<b>RPIP</b>	Regional Public Involvement Plan
<b>RTTAC</b>	Regional Transportation Technical Advisory Committee
<b>SAFETEA-LU</b>	Safe, Affordable, Flexible, Efficient Transportation Equity Act: A Legacy for Users
<b>SEFRP</b>	Southeast Florida Regional Partnership
<b>SEFTC</b>	Southeast Florida Transportation Council
<b>SERPM</b>	Southeast Florida Regional Planning Model
<b>TIP</b>	Transportation Improvement Program
<b>TMA</b>	Transportation Management Area
<b>TRIP</b>	Transportation Regional Incentive Program
<b>UZA</b>	Urbanized Area



## **I. Introduction**

This report documents progress made by the Miami-Dade, Broward, and Palm Beach Metropolitan Planning Organizations (MPOs), through the Southeast Florida Transportation Council (SEFTC), in addressing regional transportation planning in a coordinated, comprehensive, and continuing process. The tri-county region served by the three MPOs and SEFTC is shown in Appendix A. FDOT is a partner with the MPOs in the regional planning process, contributing expertise and providing technical support.

The results of our review indicate that the MPOs' and SEFTC's regional planning efforts have continued to evolve and, as a result, major objectives have been achieved. Examples of the most current accomplishments include:

- Formal adoption of the first stand-alone Southeast Florida Regional Long Range Transportation Plan (RLRTP);
- Adoption and utilization of a single regional travel demand model for transportation planning;
- Establishment of a Regional Modeling Subcommittee where uniform technical approaches have been implemented.
- Adoption of enhanced regional goals for inclusion in the RLRTP with associated regional objectives and measures of effectiveness;
- The three MPOs have also agreed to support a much larger regional effort to develop a seven-county Regional Vision and Plan for Sustainable Development for 2060;
- Joint funding of major regional projects including:
  - South Florida East Coast Corridor Study – 85 Mile Alternatives Analysis through all three counties with each MPO participating at \$2,000,000.
  - Validation/development of the next version of the Southeast Florida Regional Planning Model (SERPM) – three-county model that will support the 2040 LRTPs – with the three MPOs contributing a total of \$450,000 towards the cost of this project.
  - South Florida Regional Freight Plan – three-county freight plan that was funded \$100,000 FDOT, \$33,333 each MPO.
- Joint stakeholder participation in several cross-jurisdictional projects including:
  - Miami Urban Partnership Agreement/95 Express Bus/Bus Rapid Transit – Miami-Dade and Broward
  - I-75 Project Development & Environment (PD&E) Study – Miami-Dade and Broward
  - US 27 Freight Rail Feasibility Study – Miami-Dade, Broward, and Palm Beach
  - I-95 Managed Lanes Feasibility Study: Broward Boulevard to Donald Ross Road – Broward and Palm Beach
  - State Road 7 Mobility Studies – Broward and Palm Beach
  - State Road 7 PD&E Study (Sample Road to Glades Road) – Broward and Palm Beach

## **II. Background**

The Miami-Dade, Broward, and Palm Beach MPOs, as separate MPOs within the Miami Urbanized Area (UZA)/Transportation Management Area (TMA), made the commitment to share responsibility for regional coordination in 2003, in order to provide effective regional planning for the tri-county transportation system. SEFTC was formed in January 2006, and the original commitments and duties stated in the interlocal agreement are:

- Develop a regional long range transportation plan;

- Develop a regional project prioritization process;
- Develop a regional public involvement process; and
- Develop performance measures to assess the effectiveness of regional coordination efforts.

In 2006 and 2007, FDOT assessed the progress being made by the three MPOs in meeting their regional coordination commitments as part of annual state certification reviews. In 2008, it was decided to separate the regional reports from the certification review packages. On July 14, 2010, a regional meeting was convened to discuss the efforts made toward improving regional planning and coordination. Following that meeting, the three MPOs presented FDOT with a finalized updated regional report checklist, which can be viewed at [http://www.seftc.org/regional\\_information](http://www.seftc.org/regional_information). This regional report highlights the progress and achievements of SEFTC and the regional coordination efforts of the three MPOs as of December 2010.

### **III. Regional Long Range Transportation Plan**

The regional process was greatly enhanced when SEFTC adopted a stand-alone 2035 RL RTP in 2010, which can be viewed at [http://www.seftc.org/regional\\_information](http://www.seftc.org/regional_information). The individual MPO 2035 LRTP updates provided the basis for the stand-alone regional document. During the development process, the MPOs agreed to the use of a single regional planning model and a Regional Project Management Team. Plan deliverables were vetted through the Regional Transportation Technical Advisory Committee (RTTAC).

Detailed improvements on regional coordination were also achieved, including the following:

- A more robust regional transportation network map was developed that addresses transit, highways and freight;
- The RL RTP was coordinated with other plans for the tri-county region (e.g., South Florida Regional Transportation Authority's Strategic Regional Transit Plan);
- A regional freight plan, with regionally prioritized freight projects, was developed collaboratively by the three MPOs and FDOT and incorporated into the RL RTP;
- Regional goals and objectives were developed that accomplished consistency with the eight SAFETEA-LU planning factors, compatibility with the 2035 LRTP goals for the three MPOs, applicability across transit and roadway modes, and functional application through quantifiable measures of effectiveness;
- Unfunded and funded projects from the individual MPO LRTPs on the regional transportation network were compiled in 2035 Regional Needs and Cost Feasible Plans;
- The Regional Modeling Subcommittee was effective in developing the cost feasible 2035 SERPM network and will oversee the development of SERPM 7.0 for the 2040 long range transportation planning update cycle through a memorandum of understanding signed by the three MPOs and FDOT.

### **IV. Regional Project Prioritization**

Two regional project prioritization efforts have been ongoing among the regional partners: one relating to the Transportation Regional Incentive Program (TRIP) and the other relating to the Regional Long Range Transportation Plan efforts. Below is a description of both ongoing, complementary efforts.

#### ***Transportation Regional Incentive Program (TRIP) Prioritization Process***

The TRIP was established by the Florida Legislature specifically requiring that eligible projects be based on regional priorities. For the tri-county region served by SEFTC, the process for TRIP project selection evolved to an objective ranking with adoption of an interim regional prioritization process in 2007. This process was developed through the RTTAC (with consultant

assistance from FDOT) and was used for the FY 08/09 through FY 11/12 TRIP cycles. It ranks regional projects using criteria organized into two tiers, with one addressing the cost-benefit ratio and the other addressing project-readiness and safety, multi-modal and regional connectivity benefits. There was no FY 12/13 TRIP cycle. SEFTC submitted a list of candidate regional projects drawn from previously approved ranked lists for the comparatively small amount of funding available through the FY 13/14 TRIP cycle.

#### ***Regional Long Range Transportation Plan (RLRTP) Prioritization Process***

For the 2035 RLRTP prioritization process, efforts were undertaken to apply (similar to the TRIP prioritization process) an objectives-driven performance based approach. However, for the adopted 2035 RLRTP, a compilation approach was ultimately implemented where a subset of regional projects were identified in the three local MPO cost feasible plans and inserted into the RLRTP.

Overall, the regional prioritization process has evolved over the years due to regional coordination and collaboration efforts. The region continues to work together on the topic in order to identify strategic projects and funding opportunities.

### **V. Regional Public Involvement**

Regional public involvement activities are included within the public involvement processes of the three MPOs. They also include regular meetings of the public involvement coordinators for the three MPOs, meeting as the Regional Public Involvement Management Team (RPIMT). The Regional Citizens Advisory Committee (RCAC), composed of members of the CACs for the three MPOs, typically meets annually. SEFTC has developed a logo and has a web site ([www.seftc.org](http://www.seftc.org)) maintained by the regional consultant. Recent website enhancements include the addition of a subscription feature for notices of upcoming meetings. The website includes SEFTC plans and other documents, and improvements are made on a continuing basis.

The RPIMT completed a Regional Public Involvement Plan, which was approved by SEFTC in July 2008. The plan sets out a general structure for regional efforts and also covers particular projects. One such project was incorporation of 2035 RLRTP information into the public involvement processes conducted for the three MPO 2035 LRTPs.

### **VI. Regional Land Use Strategies**

The MPOs' updated regional report checklist highlights multiple initiatives involving land use and transportation with participation by the RPCs and other partners. Notable initiatives include the State Road 7 Collaborative which involves municipalities on a multiple county basis and the 2060 visioning program.

Regional land use strategies will be implemented through local government comprehensive plans, RPC strategic regional policy plans, and other plans that address transportation and land use connections.

### **VII. Regional Performance Measurement**

The RTTAC has initiated the development of a regional performance measurement system to be completed by July 2012. The system's purpose is to gauge the effectiveness of ongoing regional coordination efforts. The performance measures will cover both transportation system components as well as policy components in order to quantify how the enhanced regional planning and coordination efforts are leading to systematic improvements on the regional network.

## **VIII. Evolving Challenges and Opportunities**

The three MPOs took a major step in 2008 when they retained a single consultant team (contract administered by the Palm Beach MPO) to develop the 2035 RL RTP. The RL RTP consultant team was independent of the three MPOs' LRTP update efforts. SEFTC has continued, working through the MPOs, to retain a consultant to provide meeting support and support regional planning activities.

Following established annual calendars for meetings, the RTTAC and SEFTC are known forums for consideration of studies and initiatives that are regional in scale or otherwise important to the region.

Studies of interest to the tri-county region served by SEFTC are noted below:

- The 2060 Florida Transportation Plan (FTP) was recently adopted as a plan for all of Florida. The FTP is organized into three sections: (1) key trends, issues and opportunities; (2) long range goals to guide the state's transportation decisions with objectives, strategies and indicators to support each goal; and (3) key actions to implement the plan with emphasis on transportation decision making, funding and finance, and progress tracking and reporting.
- The Southeast Florida Regional Partnership (SEFRP), covering the seven-county coastal area from Monroe County to Indian River County, was formed in early 2010 to pursue a grant through the U.S. Department of Housing and Urban Development (HUD), U.S. DOT and the U.S. Environmental Protection Agency (EPA) Partnership for Sustainable Communities. The partnership is developing an improved planning process for federal housing, transportation, and infrastructure investments to protect the environment, promote equitable development, and help address the challenges of climate change. The SEFRP was awarded a \$4.25 million grant to develop a 2060 regional plan for sustainable development, including a regional vision. Economic development and equity will be key themes.

## **IX. Recommendations**

The following actions are recommended to continue the comprehensive and coordinated regional transportation planning efforts within the tri-county region served by the MPOs of Miami-Dade, Broward, and Palm Beach Counties.

### ***Development and implementation of a Regional Long Range Transportation Plan for the tri-county region***

- Continue development of the Southeast Regional Planning Model, in coordination with FDOT, to support regional long range transportation planning, travel demand forecasting, and meet other multimodal analysis needs.
- Develop an annually updated five-year SEFTC work plan to guide the timing and delivery of regional level work, including RL RTP implementation and updates, over time.
- Consider pursuing regional level greenway planning efforts.
- Continue efforts to identify public and private funding partners to leverage funds available for regional projects.

### ***Development and implementation of a regional project prioritization process for the tri-county region***

- Continue refinement of the regional project prioritization process.

***Development and implementation of a regional public involvement process to build public understanding and awareness of the region and regional transportation issues and opportunities***

- Continue implementation of the Regional Public Involvement Plan. Add measures of effectiveness for regional public involvement efforts to the plan, and provide for periodic evaluations using those measures followed by plan updates as warranted.
- Maintain the Integrated Transportation Information System across the tri-county region.
- Implement user friendly websites throughout the region displaying current and future projects (example: Miami-Dade interactive TIP).
- Continue SEFTC web site maintenance and provide better linkages to the region's three MPOs and four transit operators.
- Continue discussions relating to SEFTC membership needs for effective regional planning.

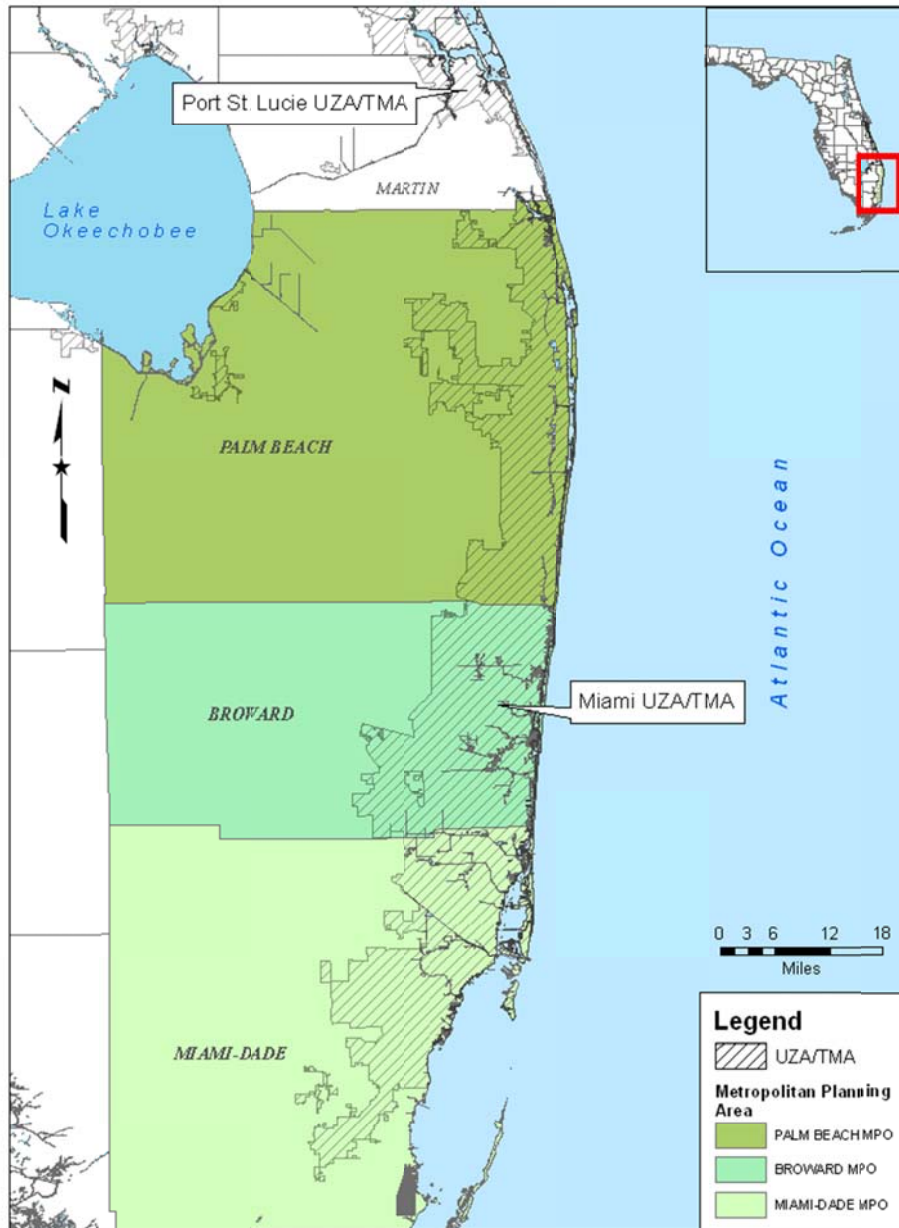
***Generation of regional land use strategies with the South Florida and Treasure Coast Regional Planning Councils***

- Continue to work with the RPCs, local governments, and other partners to develop and implement an overall strategy for the integration of transportation and land use in the region.
- Continue to participate in SEFRP 2060 regional visioning and planning efforts and consider incorporating the results in the development of the next generation (2040) RL RTP.

***Utilization of performance measures to assess the effectiveness of regional coordination efforts***

- Continue development of regional performance measures to evaluate the effectiveness of the MPOs' regional coordination efforts. These results should reflect the RL RTP goals, objectives and measures of effectiveness and ultimately become part of a recurring monitoring system.

**Appendix A: Miami Urbanized Area/Transportation Management Area**



The metropolitan planning areas for the three Miami UZA/TMA MPOs match county boundaries, creating the Southeast Florida region.

The Miami-Fort Lauderdale-Pompano Beach Metropolitan Statistical Area (MSA), consisting of Miami-Dade, Broward and Palm Beach counties and more than 100 municipalities, is the 7th largest MSA in the United States. It had an estimated population of 5,547,051 in July 2009, a 10.8% increase over 2000. Since the developed area within the MSA is situated within a relatively long and narrow strip between the Atlantic Ocean and the environmentally-sensitive Everglades, many major road and transit routes run north-south. The MSA is served by four railroad corridors, and has three international airports and four ports, three of which are deep water ports.