



Regional Transportation Technical Advisory Committee (RTTAC)

Modeling Subcommittee Meeting Agenda

November 15, 2013 – 1:30 PM

FDOT D4-DO1, Auditorium

Commercial Boulevard Fort Lauderdale, FL

Call one of the following Numbers: 888-270-9936; 602-333-0032

When prompted enter ACCESS CODE: 4508509 #

- | | | |
|-------------|-------|---|
| 1:30 | I) | Call to Order |
| 1:30 – 1:35 | II) | Approval of the July 30, 2013 Meeting Minutes |
| 1:35 – 1:55 | III) | Seven50 Alternative Scenario Modeling Update
<i>(Led by Marcela Cambor, TCRPC)</i> |
| 1:55 – 2:10 | IV) | SERPM 7.0 Update
<i>(Led by Shi-Chiang Li, FDOT District 4)</i> |
| 2:10 – 2:20 | V) | 2015 Regional Travel Characteristics Survey Update
<i>(Led by Shi-Chiang Li, FDOT District 4)</i> |
| 2:20 – 2:40 | VI) | 2040 SERPM Demographic Profile
<i>(Led by Rob Schiffer, Cambridge Systematics)</i> |
| 2:40 – 2:50 | VII) | 2040 SERPM External Trips & Special Generators
<i>(Led by Rob Schiffer, Cambridge Systematics)</i> |
| 2:50 – 3:15 | VIII) | SERPM 2018 Existing + Committed Network
<i>(Led by Srin Varanasi, The Corradino Group)</i> |
| 3:15 – 3:25 | IX) | Latest Schedules for 2040 RTP/LRTPs
<i>(Led by Rob Schiffer, Cambridge Systematics)</i> |
| 3:25 – 3:40 | X) | 2040 Regional Modeling Process
<i>(Led by Wilson Fernandez, Miami MPO)</i> |
| 3:40 – 3:50 | XI) | Next RTTAC MS Meeting and 2014 Meeting Schedule
<i>(Led by Paul Larsen/Nellie Fernandez, Palm Beach MPO)</i> |
| 3:50 | XI) | Adjournment |



Regional Transportation
Technical Advisory Committee (RTTAC)
Modeling Subcommittee
July 30, 2013 Meeting Notes

The following is a summary of the RTTAC Modeling Subcommittee (RTTAC-MS) meeting held on July 26, 2013. Meeting presentations should be provided separately via email and ftp.

MEETING TIME AND LOCATION

Tuesday, July 30, 2013 - 10:00 am to 12:00 pm
Vista Center - Palm Beach Metropolitan Planning Organization
4E-42 – 4th Floor – Traffic Engineering ITS Conference Room
2300 N Jog Road West Palm Beach, FL 33414

MEETING ATTENDEES Present and Via Phone (alphabetical order by agency/firm)

1. Sung-Ryong Han, BCC Engineering, shan@bcceng.com (via phone)
2. Paul Flavien, Broward MPO, flavien@browardmpo.org
3. Rob Schiffer, Cambridge Systematics, Inc., rschiffer@camsys.com
4. Quan Yuan, Cambridge Systematics, Inc., qyuan@camsys.com (via phone)
5. Srin Varanasi, Corradino Group, svaranasi@corradino.com
6. Jason King, Dover-Kohl, jking@doverkohl.com (via phone)
7. Hui Zhao, FDOT D4, hui.zhao@dot.state.fl.us
8. Shi-Chiang Li, FDOT D4, shi-chiang.li@dot.state.fl.us
9. Neil Lyn, FDOT D6, neil.lyn@dot.state.fl.us
10. Andrew Velasquez, FDOT/Turnpike, andrew.velasquez@dot.state.fl.us
11. Franco Saraceno, Gannett Fleming, fsarasceno@gfnet.com
12. Jessica Josselyn, Kittelson Associates, Inc., jjosselyn@kittelson.com
13. Arturo Perez, Leftwich Consulting Engineers, Inc. ajp@lce-fl.com (via phone)
14. Carlos Roa, Miami-Dade MPO, rcf@miamidade.gov (via phone)
15. Rosella Picado, PB, Picado@pbworld.com
16. Malissa Booth, Palm Beach MPO, mbooth@pbcgov.org
17. Paul Larsen, Palm Beach MPO, plarsen@pbcgov.org
18. Nellie Fernandez, Palm Beach MPO, nfernand@pbcgov.org
19. Vinod Sandanasomy, Palm Beach MPO, vsandanasomy@pbcgov.org
20. Bob Burchell, Rutgers University, burchell@rci.rutgers.edu (via phone)
21. Steve Anderson, South Florida RTA, andersons@sfrta.fl.gov
22. Marcela Camblor, Treasure Coast Regional Planning Council, marcela@tcrpc.org
23. Wade White, Whitehouse Group, wwhite@wgianalytics.com

Below is a summary of the key points discussed at the meeting. The comments have been organized by agenda topic.

I. Call to Order

Paul Larsen called the meeting to order.

II. Approval of January 10, 2013 Minutes

Minutes from the April 26, 2013 meeting were approved unanimously.

III. SERPM 7.0 Update

Shi-Chiang Li indicated that model validation is underway. Rosella Picado provided additional details on the status of model validation. Trip rates from the NHTS Add-On were lower than anticipated and several adjustments were made and tested. Some comments were received on highway network coding and are presently being addressed. Cube has some limitations in terms of transit modeling that require a “work around”. Work is proceeding on toll algorithms; however, some assumptions need to be simplified to reflect general Sunpass rates. Highway validation is about two weeks away from completion. Transit validation might take another week or so, depending on focus of detail required (regional vs. route vs. station). Then will be sensitivity testing and 2040 model runs but the approach to these efforts still requires dialogue.

IV. 2015 Regional Travel Characteristics Study (Regional Survey)

Paul provided some background on what has been discussed with FDOT/Central Office and the Florida Model Task Force on a statewide travel survey. Consideration is being given to conducting a survey for the FDOT District 4/6 region but getting the “biggest bang for the buck” is important. Considerations for a regional survey are getting something focused on the needs of activity based modeling, unique local characteristics, and sample size that were not fully addressed in the NHTS Florida Add-On. Rosella also pointed out that the NHTS didn’t include surveys of all household members, in particular children of pre-school age and over sampled retirees and non-working households. By January, we need to provide a recommendation to RTTAC on what direction we will be moving in. It was suggested that someone be assigned a task to estimate the cost of doing a survey in different ways, the time line, and what the cost of not doing a survey would be.

V. Seven50 Alternative Update *(moved up in agenda as we were running behind schedule)*

Copies of a schedule were handed out to those in attendance. Modeling technical report will be submitted around August 15th for review by the RTTAC-MS. Four land use scenarios have been developed. A population increase of 3 million and increase in employment of 2 million through 2060 is assumed. Land use scenarios include three plan scenarios and one trend scenario. Immigration to the northern counties varies among the scenarios. A simple “online modeler” has been developed for citizens and practitioners to access. Folks can select top five priority issues on this website, add comments, and answer questions about how to grow, where to invest, and how to address climate change.

VI. 2040 SERPM Demographic Profile

Rob presented a draft demographic profile. Data were initially based on Seven50 data, but now based on latest SERPM 7.0 (Seven50 data were simply a placeholder). Franco asked to receive a copy of the data used for Miami-Dade County as 2010 employment looks low and 2040 looks high.

Once the Palm Beach MPO is done converting their socioeconomic data to the SERPM 7.0 format, the demographic profile will be updated and findings distributed. Final comments and revisions will be discussed at the October meeting.

VII. 2040 SERPM External Trips & Special Generators

Rob then presented preliminary 2040 external forecasts along with growth information on airports and seaports. This information will also be forwarded for review and comment once the 2010 external trips are finalized.

VIII. SERPM 2018 Existing + Committed Network

Unfortunately, feedback has not been received from any of the three MPOs on what to include in the E+C network. Rob emphasized the importance of getting information on the E+C network ASAP in order to allow for some clarification dialogue yet remain on schedule.

IX. Latest Schedules for 2040 RTP/LRTPs

Rob described where we are in the schedule and where we need to be by the next meeting.

X. Next RTTAC-MS Meeting and 2013 Meeting Schedule

The next RTTAC-MS meeting will be held in October. The agenda will include a final discussion of 2040 external trips, the demographic profile, and special generators. The main topic of discussion will be the 2018 E+C network, which should be coded and distributed for review and comment in advance of the meeting.

XI. Adjournment

Paul Larsen adjourned the meeting.

2015 Southeast Florida Household Travel Survey



RTTAC Modeling Subcommittee
November 16, 2013 Meeting



Why a SE Florida Household Travel Survey?

- ▶ Foundational source for understanding travel markets and trip-making in the region.
- ▶ Obtain information about changing travel patterns:
 - ❖ Influx of populations with unknown travel behaviors
 - ❖ Lasting effects of the great recession
 - ❖ Differences in travel behavior between millennial populations, older populations, GenX cohort, etc.
 - ❖ Impact of new lifestyle and travel choices
- ▶ Provide relevant and timely information to support transportation planning activities and travel demand forecasting



State of the Practice

- ▶ Household travel surveys are conducted in nearly all large and medium-size MPOs in the United States at 10 to 15 year intervals
- ▶ Data are used to update travel demand models for a wide range of uses: regional planning, conformity determinations, corridor studies, New Starts studies, toll traffic and revenue studies, etc.
- ▶ Trip diary data collected for all persons in sampled households, for one weekday or two consecutive days.
- ▶ Common to collect some data with GPS units



If the Survey is Obviated or Postponed ...

- ▶ Loss of confidence in the regional travel demand model and the forecasts produced with it
- ▶ Diminished ability to forecast how the regional travel patterns will change in response to
 - ❖ changing population characteristics,
 - ❖ widespread adoption of information technologies
 - ❖ introduction of substantially new travel and lifestyle choices (car-sharing, delayed auto ownership, alternative work arrangements, etc.)
- ▶ Diminished ability to identify how projects may affect minority populations

SOUTHEAST FLORIDA Regional Transportation Plan

SERPM Demographic Profile, External Trips, and Special Generators

RTTAC Modeling Subcommittee Meeting
November 15, 2013

SOUTHEAST FLORIDA  **2040**
REGIONAL TRANSPORTATION PLAN
Miami-Dade • Broward • Palm Beach

Today's SE FL 2040 RTP Modeling Topics

- Updated 2040 demographic profile
- Updated 2040 external/special generator trips
- Updated E+C network coding
- Next steps/Schedule recap

Draft 2040 Demographic Profile

- Summary of 2010-2040 growth by MPO/County
- Updated SERPM-7 SE data current as of 11/15/13:
 - School Enrollment
 - Total Households
 - Total Employment
- Evolving HH characteristics over time & related considerations?

3

Draft 2040 Demographic Profile (Cont'd)

Summary of SE Data Forecasts for SERPM Region

Tri County	Year 2010	Year 2040	Percent Growth
Total Employment	2,630,399	3,339,501	27%
Total Households	2,098,022	2,674,408	27%
School Enrollment	1,264,630	1,435,052	13%

Summary of Totals for Broward County

Broward	Year 2010	Year 2040	Percent Growth	2010 Percent by County	2040 Percent by County
Total Employment	867,263	916,854	6%	33%	27%
Total Households	686,047	831,491	21%	33%	31%
School Enrollment	381,969	391,962	3%	30%	27%

Summary of Totals for Miami-Dade County

Miami-Dade	Year 2010	Year 2040	Percent Growth	2010 Percent by County	2040 Percent by County
Total Employment	1,125,068	1,636,614	45%	43%	49%
Total Households	864,166	1,160,540	34%	41%	43%
School Enrollment	635,371	732,033	15%	50%	51%

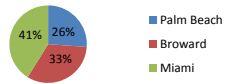
Summary of Totals for Palm Beach County

Palm Beach	Year 2010	Year 2040	Percent Growth	2010 Percent by County	2040 Percent by County
Total Employment	638,068	786,033	23%	24%	24%
Total Households	547,809	682,377	25%	26%	26%
School Enrollment	247,290	311,057	26%	20%	22%

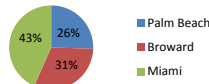
4

Draft 2040 Demographic Profile (Cont'd)

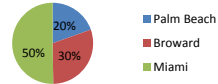
**Year 2010
Households by
County**



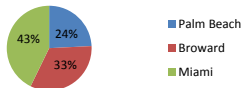
**Year 2040
Households by
County**



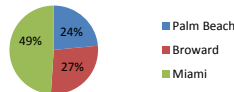
**Year 2010 School
Enrollment by
County**



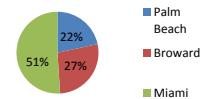
**Year 2010 Employment
by County**



**Year 2040 Employment
by County**



**Year 2040 School
Enrollment by
County**



5

SOUTHEAST FLORIDA 2040
REGIONAL TRANSPORTATION PLAN
Miami • Dade • Broward • Palm Beach

Discussion/Questions on 2040 Demographic Profile

> Evolving HH characteristics over time & considerations...

- What will be the age distribution of 2040? Is it logical compared to 2010?
- What will be the household size distribution of 2040? Is that comparable to 2010?
- What is the income distribution of 2040? How is that compared to 2010?
- What is the ratio of work/household of 2040? Is it reflecting a better/normal economy compared to the deep recession of 2010?
- Are the enrollments of K-12 students consistent with the cohort distribution? Are the enrollments of college consistent with population growth?
- What will be the housing type distribution in 2040? How is that compared to 2010? Higher density?
- How will the distribution of employment sectors changed from 2010 to 2040? Will the growth or reduction of each sector consistent with perceived trend?

6

SOUTHEAST FLORIDA 2040
REGIONAL TRANSPORTATION PLAN
Miami • Dade • Broward • Palm Beach

Updated 2040 External/ Special Generator Trips

> External trips by location>

- FDOT traffic count histories (1997-2012)
- MPO/County traffic counts (2001-2012)
- Linear projections
- BEBR growth rates
- Previous 2035 projections
- Florida Statewide Model
- SR A1A (Beach Road)
- US-1 in Palm Beach
- I-95
- Turnpike
- Mack Dairy Road
- Pratt Whitney Road
- SR-710
- US-27
- I-75
- US-41
- US-1 Miami-Dade/Monroe
- Card Sound Road

7

Updated 2040 External Trips

Traffic Counts from Florida Traffic Information DVD

Ext Zone	Count Station	Location	Linear Projections*			FLSWM		
			Yr 2035	Yr 2040	Yr 2040 - Yr 2035	Year 2005	Year 2030	Annual linear grow
4201	890024	SR A1A (Beach Road)			-	5,472	18,137	9.26%
4202	899921	US-1 in Palm Beach (PTMS)			-	34,697	53,835	2.21%
4203	932209	I-95	95,982	100,195	4,213	76,848	100,638	1.24%
4204	971955	Turnpike	71,431	78,466	7,035	56,552	90,276	2.39%
4205	N/A	Mack Dairy Road			-	2,586	8,396	8.99%
4206	937285	Pratt Whitney Road			-	5,793	20,430	10.11%
4207	930687	SR-710	7,203	7,331	129	5,296	54,589	37.23%
4208	890067	US-441	4,890	5,029	138	3,716	19,253	16.72%
4209	930502	US-27	16,463	16,843	379	13,349	25,225	3.56%
4239	862007	I-75	30,122	31,979	1,857	19,437	26,892	1.53%
4239	860357	I-75 (PTMS)	23,788	24,022	234			
4282	870003	US-41			-	3,046	21,333	24.02%
4283	870009	US-1 Miami-Dade/Monroe			-	12,451	34,469	7.07%
4284	878365	Card Sound Road			-	3,121	21,556	23.63%

8

Updated 2040 External Trips (Cont'd)

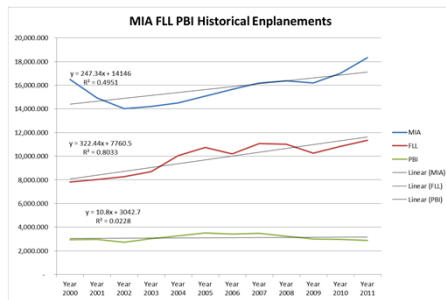
Traffic Counts from County/MPO Sources			CS Former Projection**			Recommended estimates			
Ext Zone	Count Station	Location	AADT 2035 Projection	External Trips 2035	Difference	Yr 2035 Rec'd	Yr 2040 Rec'd	Difference	
4201	1306	SR A1A (Beach Road)	6,300	8,669	2,369	2,526	2,565	39	From MPO counts projection
4202	1304	US-1 in Palm Beach (PTMS)	19,200	23,598	4,398	21,036	22,839	1,803	Based on FLSWM growth rate
4203	1200	I-95	158,900	138,000	(20,900)	95,982	100,195	4,213	From FTI counts projection
4204	1102	Turnpike	93,600	81,896	(11,704)	71,431	78,466	7,035	From FTI counts projection
4205	N/A	Mack Dairy Road	n/a	3,510	n/a	2,586	8,396	5,810	From FLSWM due to no traffic
4206	1104	Pratt Whitney Road	n/a	3,432	n/a	5,948	6,534	586	From MPO counts projection
4207	1101	SR-710	14,500	33,970	19,470	7,203	7,331	129	From FTI counts projection
4208	7005	US-441	6,700	6,364	(336)	4,890	5,029	138	From FTI counts projection
4209	7033	US-27	28,000	25,398	(2,602)	16,463	16,843	379	From FTI counts projection
4239		I-75	55,600	54,919	(681)	30,122	31,979	1,857	From FTI counts projection
4239		I-75 (PTMS)			-				From FTI counts projection
4282		US-41	7,900	13,224	5,324	5,618	5,855	238	Based on BEBR growth rate
4283		US-1 Miami-Dade/Monroe	32,000	44,031	12,031	17,190	17,916	727	Based on BEBR growth rate
4284		Card Sound Road	n/a	16,066	n/a	3,708	3,864	157	Based on BEBR growth rate

9

Updated 2040 Special Generator Trips

Airport	CS previous forecasted emplanements in 1000s	
	Year 2035	Year 2040
MIA	22,802.900	24,039.600
FLL	19,045.900	20,658.100
PBI	3,420.700	3,474.700

Source:



2005 Compare	2035 compare
103%	75%
100%	77%
101%	42%

latest forecasts are higher for 2005 than before
latest forecasts are lower for 2035 than before

	Count	Station ID	Yr 2011	Yr 2012
Miami Port	87-2513	15300	15700	
T factor		27.2	30.3	
Ft Lauderdale Port	86-9297	2300	2300	
T factor		6.3	5.9	
Ft Lauderdale Port	86-6202	13600	14100	
T factor		29	27.7	
Ft Lauderdale Port	86-7758	4300	4300	
T factor		21.6	22.2	
Palm Beach Port	93-7472	400	400	
T Factor		6.4	5.1	

10

Discussion/Questions on 2040 External/ Special Generator Trips

11

SOUTHEAST FLORIDA
REGIONAL TRANSPORTATION PLAN **2040**
Miami-Dade • Broward • Palm Beach

2018 E+C Network Update

RTTAC Modeling Subcommittee Meeting
The Corradino Group
11/15/2013

SOUTHEAST FLORIDA
REGIONAL TRANSPORTATION PLAN **2040**
Miami-Dade • Broward • Palm Beach

Overview of E+C coding information

- > Miami-Dade MPO
 - Information Received 9/09/2013
 - Additional conversations/clarifications
 - 171 highway projects
 - No new transit projects
- > Broward MPO
 - Information Received 8/29/2013
 - 46 highway projects
 - 26 transit line changes
- > Palm Beach MPO
 - Information Received 8/29/2013
 - 51 highway projects
 - 7 transit projects

Overview of additional follow up

- > Miami-Dade MPO
 - Received additional information between 9/19-10/15
- > Broward MPO
 - Received additional information between 9/11-10/15

E+C Network Submission and Comments

- Submitted the 1st draft on 9/21/2013
- Received comments from the MPOs
 - Palm Beach 11/6/2013
 - Broward 11/7/2013
 - Miami-Dade
 - 10/31/2013 initial comments
 - 11/8/2013 additional clarifications
 - Few pending clarifications in works

Coding Process

- The most up to date 2010 networks as of September 2013 were used as basis
- Coded all the 2018 projects as provided by the MPO/Consultant partners
- Updated additional 2010 transit routes based on the latest changes from SERPM7 team in October
- A new network attribute called TCG_ID corresponds to the Corradino_ID in projects information spreadsheets
- Used multiple analysts to code the information , and used CUBe's "Save Log files" features to merge the changes

Additional Coding Information

- Some additional coding information was used to expedite coding process
 - I-95 Managed Lanes
 - Coded between GGI and Linton
 - Used the latest access points from the I-95 CDC team;
 - I-75 Express Lanes
 - Coded between SR 826 and I-595
 - Websites information is unclear. To expedite we assumed the configuration from SR 826/Gratigny PD&E studies in Miami-Dade
 - The information is clear in Broward County
 - SR 826 Managed Lanes
 - Coded between Flagler Street and NW 154th Street, tying into I-75 managed lanes
 - The website only provided between Flagler Street and NW 74th street
 - We assumed configuration using SR 826 PD&E study

Additional Coding Information (Contd.)

- I-595 Reversible Managed Lanes Coding
 - 3ML coded in each direction with codes REVERSIBLE=1 (AM only);2 (PM Only)
 - AM: 4AM-1PM Eastbound operations- all 3 lanes open to traffic only EB
 - PM: 2PM-2AM Westbound operation- all 3 lanes open to traffic only WB
 - 1 hour break for operations

Additional Coding Information (Contd.)

- I-595 Express routes coded
 - BB&T Center to Miami/Brickell
 - BB&T Center to Fort Lauderdale
- Since several Broward transit headway changes were performed, a separate transit network updates document was delivered

Additional Coding Information (Contd.)

- Tolls updated in Miami-Dade County, due to recent upgrades
- Open Road Toll Links coded-"Tolltype" attribute with a code of 3, and service seconds=1
- Turnpike Managed Lanes Coding
 - Code HOT=1
 - Also code toll Plaza; FTC2=95; and CARTOLL=\$\$
 - This assumes, vehicles accessing Turnpike Managed Lanes will be tolled twice (Fixed and dynamic)
- SR826/836 interchange system coding
 - Design build
 - No fixed line diagrams
 - Worked used videos on websites
 - Impacts on several SR 836 interchanges- NW 87 Ave, NW 72, Milam Dairy etc.

Additional Coding Information (Contd.)

- Managed Lanes Coding followed the same coding procedure as I-95 Express
- Tolling process/toll lookup table was assumed to be similar to that of I-95 Express
 - Toll is based on Volume/Capacity ratio or congestion
- SERPM7 model is capable of incorporating different tolling process, if detailed info is available.

Process – E+C Network Coding

- Regional Consultant built 2018 highway and transit networks
 - By adding projects to 2010 networks, between 2010-2018 time period
- 2010 SERPM7 network was basis- A joint effort between MPOs and FDOT
 - Any issues will be resolved jointly by FDOT and MPOs
- Regional consultant coded and ran 2018 E+C network model
 - Consists of 2018 networks
 - 2040 socioeconomic data

Process – E+C Network Coding (Cont'd)

> MPOs

- Provided existing and committed project information
- Followed guidelines and templates distributed by the Regional Consultant (on June 12)
- Ensured consistency among all projects within MPO jurisdiction, including SIS and regional transit facilities

> This involved compiling data in coordination with

- Local municipalities, public works departments
- FDOT
- Transit Agencies (local and regional)
- Florida Turnpike, MDX

23

SOUTHEAST FLORIDA
REGIONAL TRANSPORTATION PLAN
Miami • Dade • Broward • Palm Beach **2040**

Process – E+C Network Coding (Cont'd)

- > MPOs served as primary “gate keepers” of the information to be coded, from their jurisdiction
- > Regional consultant will distribute model outputs to local MPOs for their alternatives testing
- > Respective MPOs reviewed and conducted quality control of SERPM network coding for 2018 E+C network
- > Two iterations were performed:
 - First iteration -development of 2018 network
 - Second iteration -a revision of the network based on MPO review comments

24

SOUTHEAST FLORIDA
REGIONAL TRANSPORTATION PLAN
Miami • Dade • Broward • Palm Beach **2040**

Discussion/Questions on draft E+C network coding

2040 Regional LRTP E+C Network Development												
Primary Highway Network Attributes												
1	2	3	4	5	6	7	8	9	10	11	12	13
MPO Project Number	Facility Name	From Location	To Location	Number of Existing Lanes	Number of Future Lanes	Posted Speed	Specify changes in Signal Locations, Overpasses/Underpasses	"Divided" Attributes (Divided by Median/Left Turn lane/Presence of Right Turn Lane)	Opening Year	Project Description/Additional Notes	Map/Graphic Provided?	
PW00040344	SW 337 Avenue	HEFT	US-1	2	4	45	New signal at SW 264 St.	No Change	2013	addition of 1 lane in each direction	No	
337	Calum Road	NW 34 Ave	Lyons rd	0	4	40	New Signal at Banks rd	Divided by Median	2014	new facility	No	

2040 Regional LRTP E+C Network Development												
Primary Transit Network Attributes												
1	2	3	4	5	6	7	8	9	10	11	12	13
MPO Project Number	Route Number	Route Name	Type of Service Local/Express etc.)	Operator Name	From Location	To Location	Headway1 (AM: 6AM-9AM)	Headway2 (PM: 3AM-3:30PM)	Headway3 (PM: 3:30PM-7PM)	Additional Notes/Route Description	Opening Year	Map/Graphic provided?
T0000001		North Corridor	Premium	Metro Rail	MLE (i. Metro Rail Station)	MD/BD County line				Extend Metrorail from Dr. Martin Luther King Jr. Metrorail Station to the Miami-Dade/Broward County line	2014	No
117	MI 112/BrDB/BD	University Drive Bypass	Local	BCT			20	0	20	Change headways from 30 to 20min	2014	No

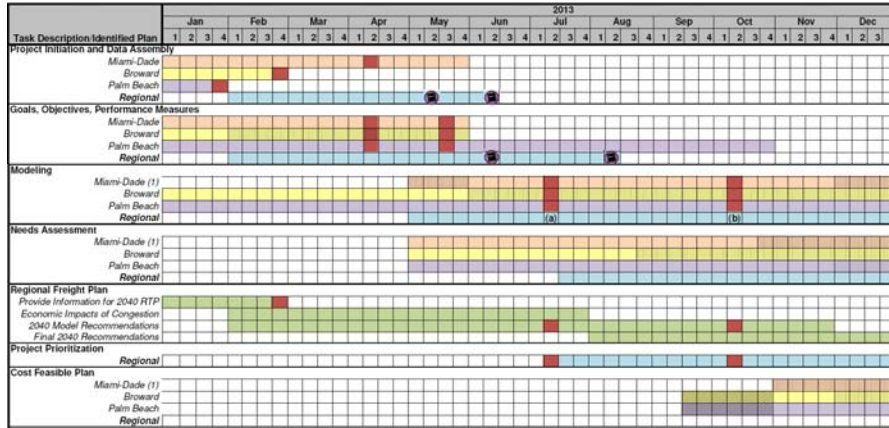
25

Next Steps/Schedule Recap

- Suggested refinements to any components discussed today?
- Finalize regional performance measures
- Complete 2040 E+C model run with output statistics
- Delivery of 2040 E+C SERPM7 datasets
- Development of baseline 2040 Needs Plan network?
- ***Plans for February RTTAC-MS meeting:***
 - *Summary of results from baseline 2040 Needs Plan run*
 - *Presentation of regional projects in 2040 MPO Needs Plans*

26

Draft 2040 RTP Schedule for 2013



27

Draft Modeling Schedule for 2040 RTP

Task	Deliverables	Activity Start Date	Activity Completion Date	Lead Modeling Firm	Prerequisites to Begin	RTTAC-MS Meeting Dates	RTTAC-MS Meeting Key Agenda Items
7	Modeling						
a	External/special generators	May 8 2013	Jul 24 2013	Cambridge Systematics	n/a	Jul-13	Presentation on draft 2040 external/special generator trips
	Demographic profile	Jun 12 2013	Jul 31 2013	Cambridge Systematics	2040 SE Data Forecasts from MPCs		Presentation on draft 2040 demographic profile
	E+C networks (round 1)	Jul 3 2013	Aug 14 2013	The Corradino Group	Adopted FY 13-18 TIPs		Presentation on draft E+C network coding
b	E+C networks (round 2)	Aug 14 2013	Sept 25 2013	The Corradino Group	Coded E+C networks	Oct-13	Review/comments on E+C network coding
	E+C network plus baseline network alternatives	Sept 25 2013	Oct 30 2013	The Corradino Group	E+C network comments		Finalization of E+C network coding and input on baseline network alternatives
c	Needs plan (round 1)	Oct 30 2013	Jan 15 2014	The Corradino Group	Maps and project descriptions	Jan-14	Review/comments on Needs Plan network coding
	RTTAC meeting presentation (on Needs Plan)	Jan 15 2014	Jan 15 2014	Parsons Brinckerhoff	Preliminary results from Needs Plan model run		Presentation on draft Needs Plan model results
d	Needs plan (round 2)	Jan 15 2014	Feb 27 2014	The Corradino Group	Final Needs Plans and coding comments	Apr-14	Finalization of Needs Plan network coding and input on remaining edits
	Regional network alternative	Feb 27 2014	Mar 27 2014	Cambridge Systematics	Final Needs Plan networks		Presentation on Regional Needs and Consistency Issues
	Cost Feasible Plan (round 1)	Mar 27 2014	May 14 2014	The Corradino Group	Maps and project descriptions		Presentation on draft Cost Feasible Plan network coding
e	Cost Feasible Plan (round 2)	May 14 2014	Jul 9 2014	The Corradino Group	Final Cost Feasible Plans and coding comments	Jul-14	Finalization of Cost Feasible Plan network coding and input on remaining edits
	RTTAC meeting presentation (on Cost Feasible Plan)	Jul 28 2014	Jul 28 2014	Parsons Brinckerhoff	Preliminary results from Cost Feasible Plan model run		Presentation on draft Cost Feasible Plan model results
f	2020 and 2030 interim year networks (round 1)	Jul 9 2014	Oct 8 2014	The Corradino Group	Recommendations for Interim Year network coding	Oct-14	Review/comments on Interim Year network coding
	SEFTC meeting presentation (on Cost Feasible Plan)	Oct 29 2014	Oct 29 2014	Parsons Brinckerhoff	Final results from Cost Feasible Plan model run		Presentation on final Cost Feasible Plan model results
g	2020 and 2030 interim year networks (round 2)	Oct 8 2014	Nov 12 2014	The Corradino Group	Final Interim Year Plans and coding comments	Dec-14	Finalization of Interim Year network coding
	Draft Task 7 Tech Memo	Oct 8 2014	Nov 12 2014	Cambridge Systematics	n/a		Discussion of comments on draft Tech Memo and final model results
	Final Task 7 Tech Memo	Nov 12 2014	Dec 31 2014	Cambridge Systematics	Comments on draft report		Discussion on delivery of model files

28

Discussion/Questions on Next Steps/ Schedule