

THE SOUTHEAST FLORIDA REGION AT A GLANCE...

Region's Population Changes

July 2008

Statistical data compiled by SFRPC



Florida's urbanized areas are merging and residents are crossing county lines to do business, work and shop. Counties are collaborating and planning on a regional basis for the future needs of their residents. The federal government has designated the eastern parts of Miami-Dade, Broward, Palm Beach and southern Martin counties as the Miami Urbanized Area (UZA). The three Metropolitan Planning Organizations (MPOs) in the new UZA will now develop and implement regional long range transportation plans for the combined tri-county planning area, coordinating the transportation planning process. With that in mind, take a look at a few statistics about the region.

For more information...
www.seftc.org

Over 270,000 Travel Between Counties to Work

Employment Interchange Measure - 2000

	P1	P2
Palm Beach / Broward	37,685	7.92
Palm Beach / Miami-Dade	5,560	1.17
Broward / Palm Beach	52,712	7.09
Broward / Miami-Dade	115,044	15.47
Miami-Dade / Palm Beach	3,843	0.43
Miami-Dade / Broward	60,096	6.68

P1 = # of residents of the first area that work in the second area

P2 = % of residents of the first area that work in the second area

Source: US Bureau of the Census, 2000 Census (County-to-County Worker Flow Files, released March 6, 2003)

Many Miami-Dade Residents Relocate to Broward County

Domestic migration and mobility between Palm Beach, Broward and Miami-Dade is significant. Between 1995 and 2000, 90,000 Miami-Dade residents moved to Broward, and 36,000

Broward residents moved to Palm Beach. On the other hand, 18,000 Broward residents moved to Miami-Dade, and an equal number moved from Palm Beach to Broward.

Resident Population Estimates By Age (2006)

<u>AGE</u>	<u>P-BEACH</u>	<u>BROWARD</u>	<u>M-DADE</u>
Under 5	76,277	117,558	163,546
5 to 19	220,903	349,682	478,328
20 to 34	213,347	315,503	458,126
35 to 64	491,516	754,236	960,359
65+	271,970	250,657	341,849
Total	1,274,013	1,787,636	2,402,208

Source: US Bureau of the Census, Population Estimates Branch (August 9, 2007).

Births and International Migration Lead Population Growth

According to the United States Bureau of the Census (March 20, 2008), births added the most people to the population in Palm Beach, Broward and Miami-Dade counties between the years 2000 and 2007.

For the tri-county region, the second highest cause of population increase was international migration. However, for Miami-Dade, international migration was the driving force of increase, adding 271,004 new residents to the county. The second highest population increase for Miami-Dade came from 236,001 births.

During the same seven-year period, births increased the population

in Broward by 164,598. International migration increased it by 107,155.

For Palm Beach, the top two growth components were 106,163 births and

77,666 new domestic migrants.

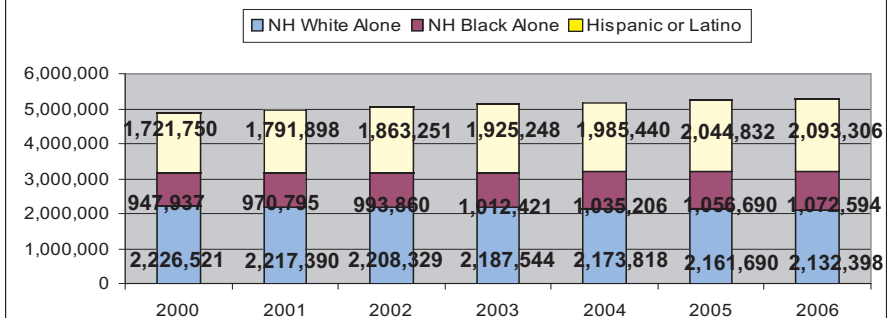
Deaths decreased the population in the three county region by a total of 344,412.

Resident Population Estimates and Projections (1920 - 2030)

<u>YEARS</u>	<u>P-BEACH</u>	<u>BROWARD</u>	<u>M-DADE</u>
1920	18,654	5,135	42,753
1930	51,781	20,094	142,955
1940	79,989	39,794	267,739
1950	114,688	83,933	495,084
1960	228,106	333,946	935,047
1970	348,753	620,100	1,267,792
1980	576,758	1,018,257	1,625,509
1990	863,503	1,255,531	1,937,194
2000	1,131,191	1,623,018	2,253,779
2010	1,404,900	1,869,900	2,568,800
2020	1,663,700	2,131,200	2,860,900
2030	1,879,400	2,339,000	3,103,000

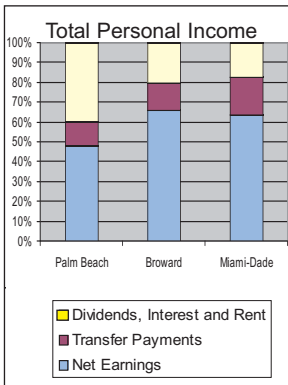
Source: US Bureau of the Census (1920-2000) Projections: University of Florida, Bureau of Economic and Business Research (February 2007)

Tri-County Annual Race/Ethnic Composition (2000 - 2006)



Source: US Bureau of the Census, Population Estimates Branch (August 9, 2007)

Economic Profile: Sources of Personal Income (in \$ millions)

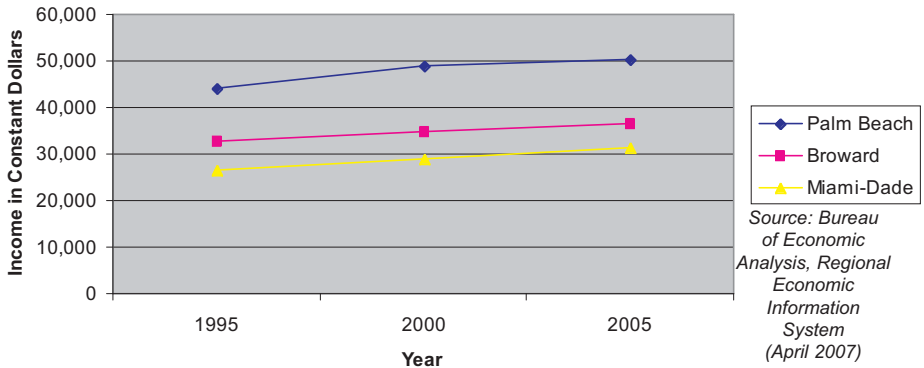


Source: Bureau of Economic Information System (April 2007)

SOURCE	P-BEACH	BROWARD	M-DADE
Total Personal Income	63,718	65,213	74,534
Net Earnings	30,742	42,989	47,471
Transfer Payments	7,693	8,942	14,303
Dividends, Interest, Rent	25,282	13,283	12,760
Per Capita Personal Income	50,371	36,596	31,347
Net Earnings	24,303	24,124	19,965
Transfer Payments	6,082	5,018	6,016
Dividends, Interest, Rent	19,986	7,454	5,366

Palm Beach Ahead In Per Capita Personal Income

Per Capita Personal Income (1980 - 2005)



Source: Bureau of Economic Analysis, Regional Economic Information System (April 2007)

From 1995 to 2005, the per capita income of Palm Beach County residents has steadily exceeded the per capita income of those living in Broward and Miami-Dade counties.

The April 2007 report of the Bureau of Economic Analysis, Regional Information System (April 2007) reported that in Palm Beach, the per capita income in 1995 was \$44,074. It was \$48,883 in 2000 and \$50,371 in 2005.

In Broward, the per capita income was \$32,920 in 1995, \$34,825 in 2000 and \$36,595 in 2005.

Per capita income for Miami-Dade residents was \$26,646 in 1995, \$29,059 in 2000 and \$31,347 in 2005.

Three County Components of Population Growth (2000-2007)

YEARS	(+) BIRTHS	(-) DEATHS	(+) INT MIG
2000 - 01	68,399	-48,376	68,703
2002 - 03	69,078	-48,051	58,637
2004 - 05	70,302	-47,451	54,509
2006 - 07	72,329	-46,724	55,963

Source: US Bureau of the Census (March 20, 2008)

Miami-Dade Ranks As Nation's 8th Largest County

According to the South Florida Regional Planning Council, population growth is a major factor in the changing character of Southeast Florida.

In 2006, Miami-Dade was the 8th largest county in the United States (2.4 million), Broward was the 15th (1.8 million) and Palm Beach was 29th (1.3 million). These three counties make up the nation's 7th largest metropolitan region with a population of 5.5 million.

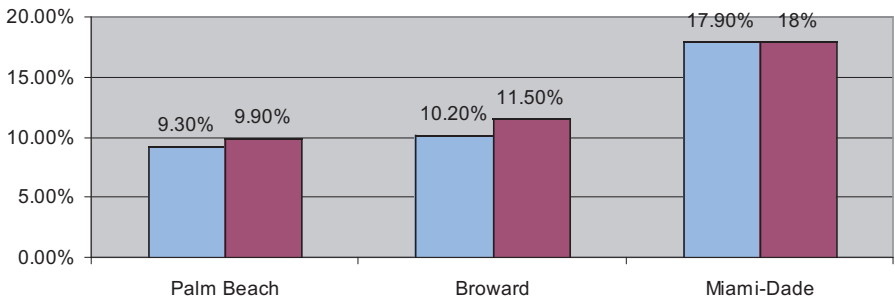
In the next 24 years, Miami-Dade is expected to grow by 666,000, Palm Beach by 591,000 and Broward by 586,000.

Annual Initial Unemployment Claims (1996-2006)

YEAR	P-BEACH	BROWARD	M-DADE
1996	37,217	47,088	76,338
1997	34,425	45,090	73,221
1998	32,233	41,331	66,456
1999	30,441	39,116	60,856
2000	28,622	37,933	62,275
2001	38,547	57,358	87,773
2002	41,236	60,645	86,023
2003	39,611	55,683	78,810
2004	53,721	58,233	79,681
2005	44,855	66,847	78,547
2006	34,915	44,986	61,789

Source: Florida Agency for Workforce Innovation

Poverty Rates for All Persons (1989 and 1999)



Source: US Bureau of the Census of Population and Housing (1990 and 2000)

Legend: 1989 (blue square), 1999 (maroon square)